

MORNING BREAK



STOCK MARKET INDEX

FBMKLCI
1675.86
▼ -2.24
-0.13%

SHANGHAI
2844.51
▼ -14.83
-0.52%

NIKKEI
22.318.88
▼ -23.12
-0.10%

DJIA
24,283.11
▲ +30.31
+0.12%

FTSE
7537.92
▲ +28.08
+0.37%

BUSINESS & ECONOMIC NEWS

LOCAL

Grab akan perkenal ciri baharu untuk tingkat mutu keselamatan pengguna (*Astro Awani*)

Maqis warta, kawal 57 pintu masuk import dan eksport (*Utusan*)

Industri runcit dijangka meningkat empat peratus (*Berita Harian*)

Strategi mudah mendapatkan pelanggan segera (*Utusan*)

RHB launches total online solution for SMEs (*NST*)

GLOBAL

Alibaba passes IBM in cloud computing and is winning business from European and US clients (*CNBC*)

China Mines Silicon Valley for tech talent (*Wall Street Journal*)

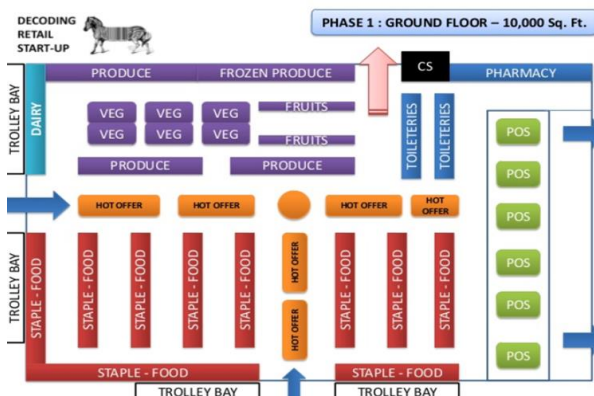
Trump signals he favors less confrontation with China on tech (*Bloomberg*)

Uber wins right to keep operating in London (*CNN*)

Evaluating reforms, more supervision and tech to be future of financial regulation: Monetary Authority of Singapore's (MAS) chief (*Channel News Asia*)

INFO

How to Create and Use a Retail Planogram



A planogram is a visual diagram, or drawing, that provides details on the placement of every product in a retail store. These schematics not only present a flow chart for the particular merchandise departments within a store layout but also show which aisle and on what shelf an item is located. A planogram should also illustrate how many facings are allocated for each Stock Keeping Unit.

For more info, click [HERE](#).

Source: *The Balance Small Business*