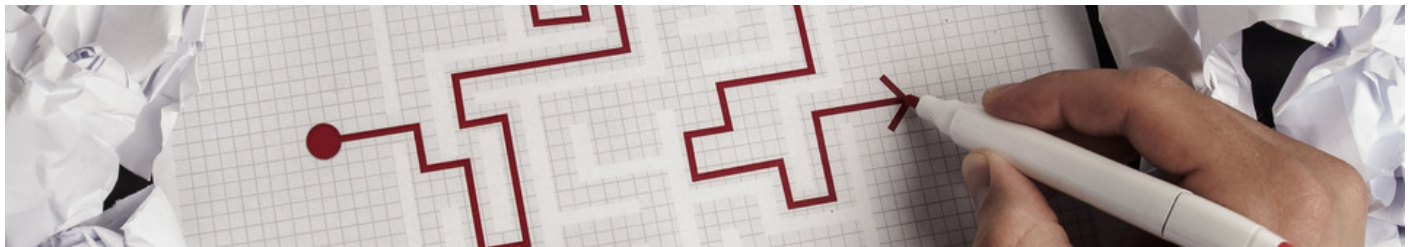


MORNING BREAK

INSTITUT KEUSAHAWANAN NEGARA BERHAD (INSKEN)

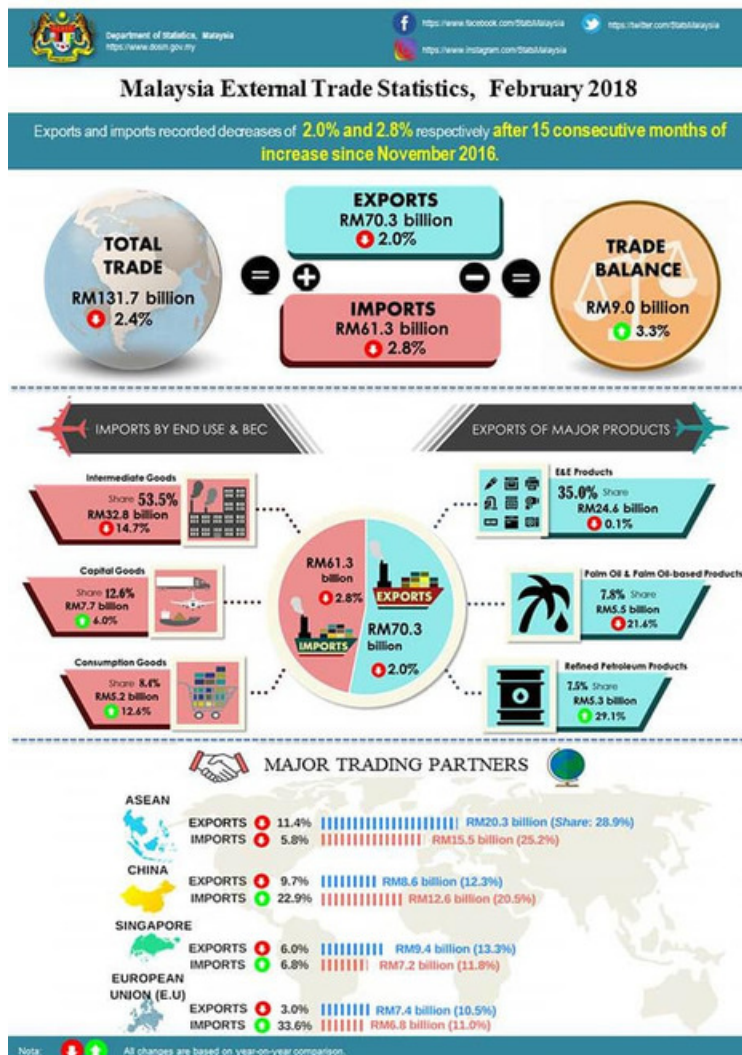


Stock Market Index

FBMKLCI: 1836.13 ▲ + 1.11% SHANGHAI: 3131.11 ▼ - 0.18% NIKKEI: 21673.35 ▲ + 0.12% DJIA: 24505.22 ▲ + 0.99% FTSE: 7199.50 ▲ + 2.35%

Economic Indicator	Actual	Previous	Coverage	Frequency	Data Release
Malaysia External Trade Statistics	RM131.7bil	RM156bil	Feb/18	Monthly	Apr/18

COMMENT



For more info, kindly click [HERE](#).

Source: DOSM

BUSINESS & ECONOMICS NEWS

LOCAL

- Wilayah Ekonomi Pantai Timur (ECER) pemangkin transformasi Segamat (*Utusan*)
- Eksport produk halal Malaysia ke Thailand RM1.76 bilion pada 2017 (*Berita Harian*)
- Cloud computing to support Selangor’s biz (*Malaysian Reserve*)
- Two consortia selected for KL-Singapore high speed rail civil works (*The Star*)
- Number of ultra-wealthy Malaysians rises by 11pct to 310 (*NST*)

GLOBAL

- Attack on Saudi tanker signals escalation in Yemen war, and it could mean higher oil prices (*CNBC*)
- Asia Pacific Council of American Chambers of Commerce (APCAC) 2018: A bold future for US businesses in Asia (*NST*)
- Southeast Asia needs tax moves for infrastructure, Maybank says (*Bloomberg*)
- Solar power eclipsed fossil fuels in new 2017 generating capacity: UN (*Channel NewsAsia*)
- To buy a car in China, hit the vending machine (*Wall Street Journal*)